

## Document / Drawing Review Status

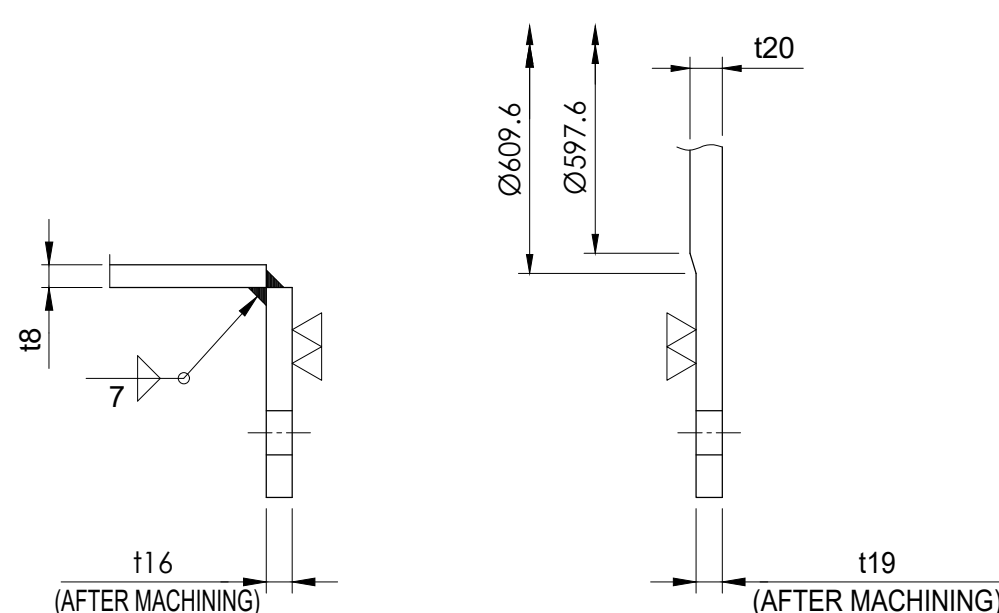
- ☐ Proceed, no exception taken
- ☐ Proceed subject to incorporation of changes indicated. Revise & Re-Submit
- ☐ Do not proceed. Undertake changes noted and re-submit
- ☐ Review not required work may proceed

**IMPORTANT**

Acceptance with or without comments of vendor's drawing or documents shall not relieve the vendor from complying with all terms, conditions, codes, standard & requirements of order & specification. Re-submit when a revision is made to the drawing or document by the manufacture or by sub-sequent.

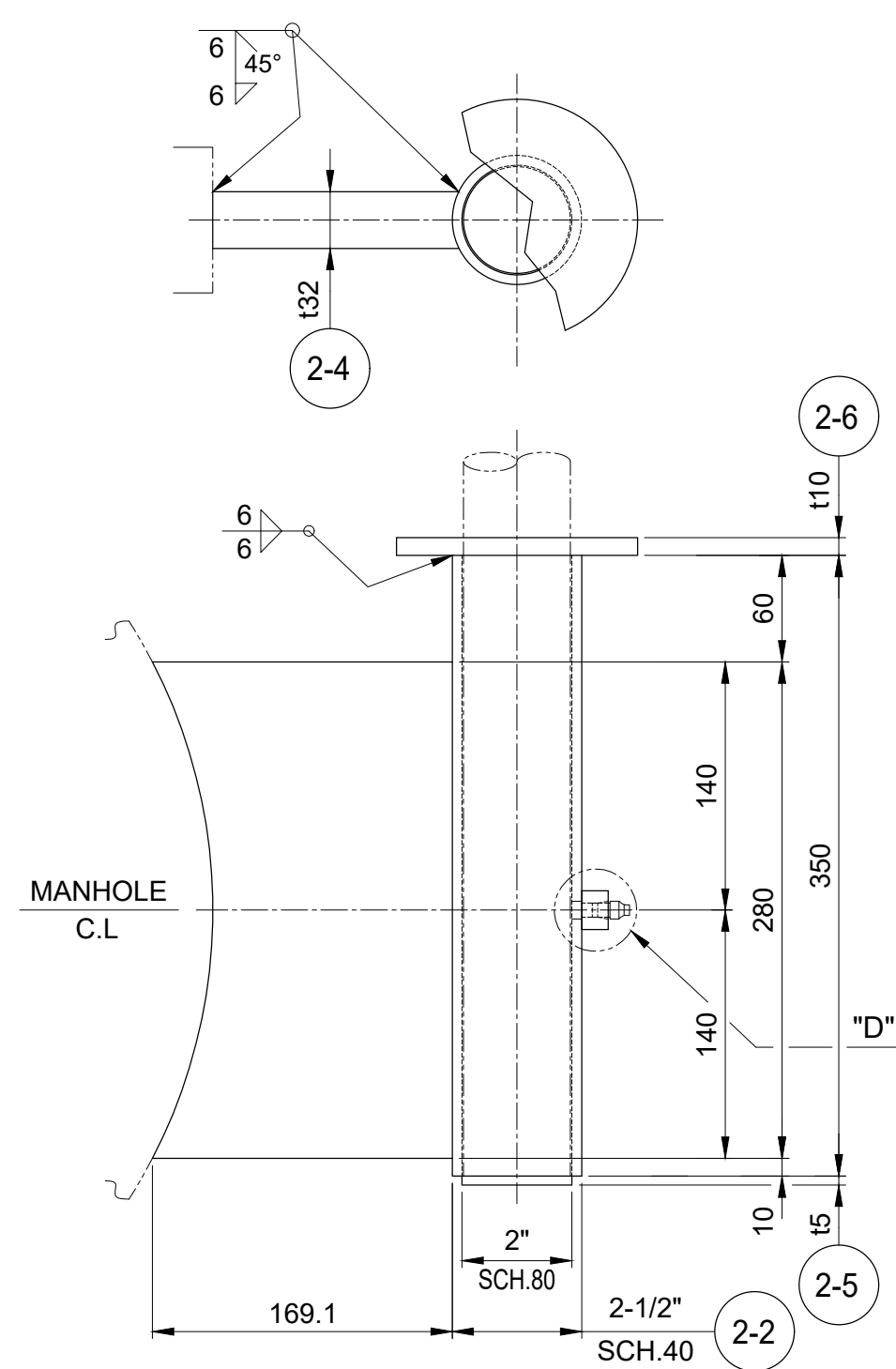
Sign: \_\_\_\_\_ By: \_\_\_\_\_ Date: \_\_\_\_\_

### DETAIL OF MANHOLE



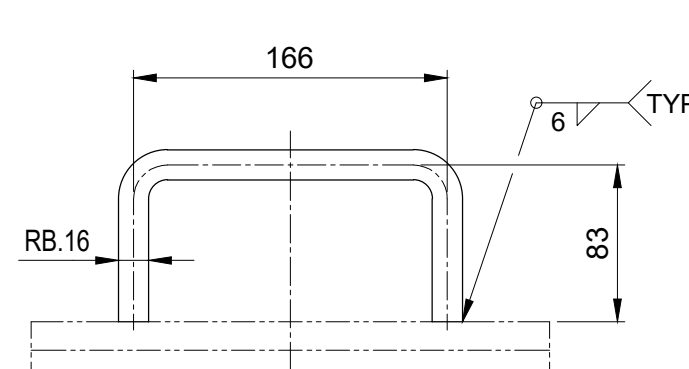
DETAIL "A"

DETAIL "B"

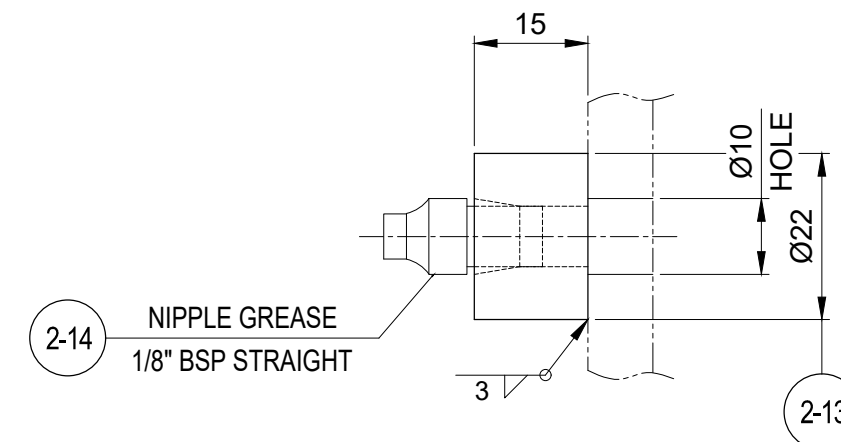


DETAIL "C"

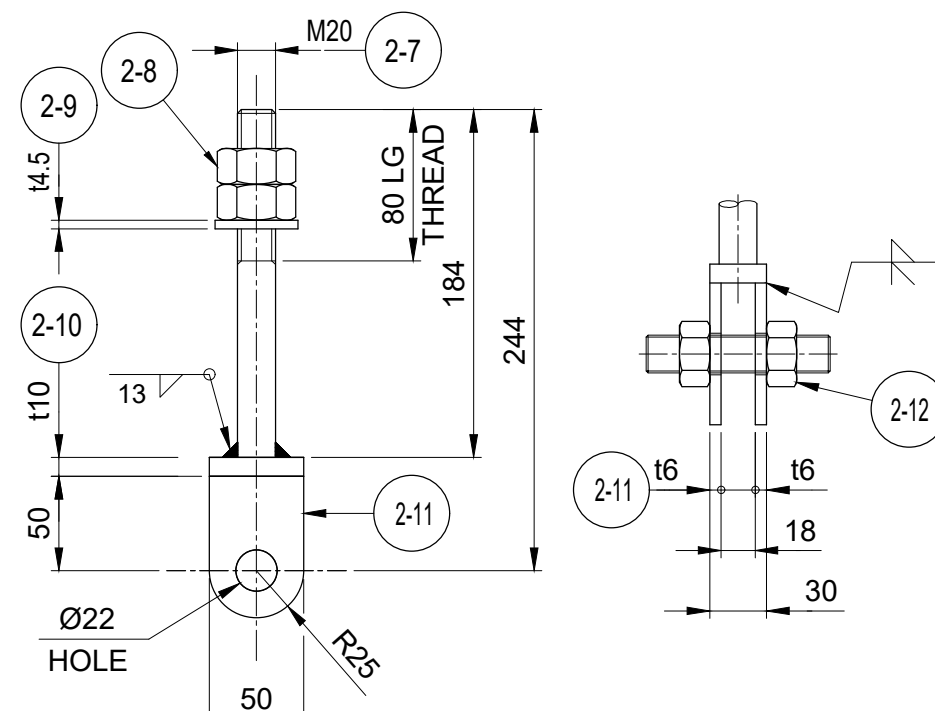
DAVIT ASSEMBLY  
(DAVIT ORIENT. SEE ASS'Y DWG)



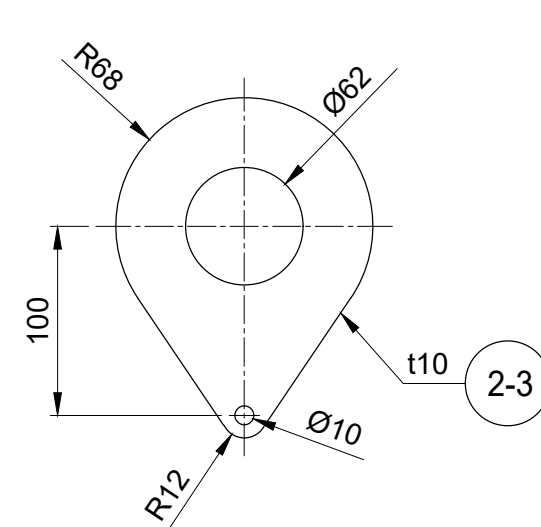
HANDLE DETAIL (1-7)



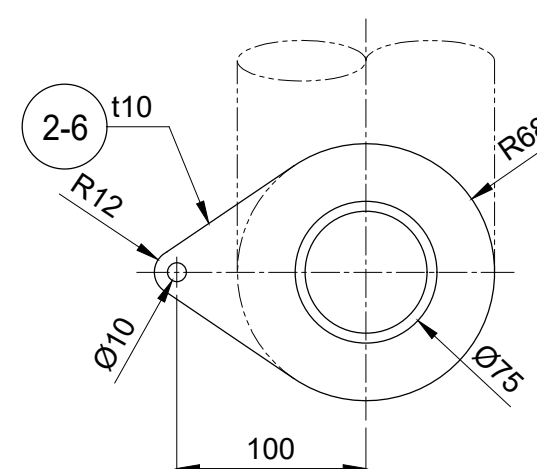
DETAIL "D"



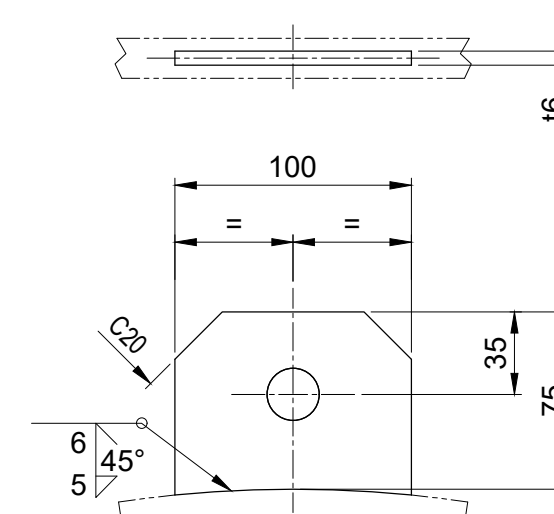
## HANGER DETAIL



HINGE RING



## MOUNTING RING



HOOK (3

NOTE :

1. ALL DIMENSIONS ARE IN MILLIMETERS UNLESS OTHERWISE SPECIFIED.  
2. GASKET MATERIAL :

3. ALL WELDED JOINTS SHALL BE SUBJECTED TO NON-DESTRUCTIVE TESTING (NDT) IN ACCORDANCE WITH APPLICABLE CODES AND STANDARDS

3		HOOK	ASTM A36	1			t6
	-14	NIPPLE GREASE	ASTM A36	2			1/8" BSP STRAIGHT
	-13	COUPLING	ASTM A36	1			1/8" BSP HALF COUPLING
	-12	HEX. BOLT/2N (FULL THREAD)	A36	1			M20x90L
	-11	HANGER LUG	ASTM A36	2			t6
	-10	HANGER PLATE	ASTM A36	1			t10
	-9	WASHER	ASTM A36	1			t4.5x1.D22xO.D50
	-8	NUT	A194 Gr.2H	2			M20
	-7	HANGER ROD	ASTM A36	1			M20x270L
	-6	MOUNTING RING	ASTM A36	1			t10
	-5	END PLATE	ASTM A36	2			t6
	-4	SUPPORT PLATE	ASTM A36	1			t32
	-3	HINGE RING	ASTM A36	1			t10
	-2	PIPE SLEEVE	ASTM A53 Gr.B	1			2-1/2" SCH.40
	-1d	PIPE DAVIT	ASTM A53 Gr.B	1			2" SCH.80
	-1c	PIPE DAVIT	ASTM A53 Gr.B	1			2" SCH.80
	-1b	ELBOW DAVIT	A234 Gr.WPB	1			2" SCH.80
2	-1a	PIPE DAVIT	ASTM A53 Gr.B	1			2" SCH.80
	-7	HANDLE	ASTM A36	2			RB Ø16
	-6	STUD BOLT/2H.N	A193 Gr.B7 / A194 Gr.2H	28			U3/4"-10UNCx110L
	-5	GASKET	NOTE 2	1			15 1/2"
	-4	COVER PLATE	ASTM A36	1			t19 (USED t20)
	-3	REINF. PAD	ASTM A36	1			t12
	-2	NOZZLE NECK	ASTM A36	1			t8
1	-1	PIPE FLANGE	ASTM A36	1			t16 (USED t18)
ITEM NO.	NAME OF PART		MATERIAL	Q'TY	CONST.&2 YEARS COMM'L   OPER.	UNIT (EA)	REMARKS
	PART CODE				SPARE		

( 1 ) SET TO BE MANUFACTURED

REVISIONS										
B	04/05/26		ISSUED FOR APPROVAL		INK	HER	DS	HK	MS	-
A	06/04/26		ISSUED FOR APPROVAL		INK	HER	DS	HK	MS	-
REV	DATE		DESCRIPTION		DRN	CKD	DESIGN ENG	LEAD ENG	PROJ APP	CLIENT APPT



	NAME	DATE
DRAWN	INKO	26/02/26
CHECKED	-	-
DESIGN ENG	-	-
LEAD ENG	-	-
PROJ APP'D	-	-
CLIENT	-	-



PT.HANAZONO ENGINEERING INDONESIA

L2, 38 RICHARDSON ST WEST PERTH,  
WESTERN AUSTRALIA 6005  
+61 8 9432 0100  
[www.comoeng.com.au](http://www.comoeng.com.au)

TITLE	POBOYO 2000 TPD EXPANSION PROJECT FILTER PRESS AREA FILTER FEED TANK (4820-TK-119) DETAIL OF MANHOLE
-------	---

PLOT SCALE
AS-SHOWN

NEITHER THIS DOCUMENT NOR ITS  
CONTENTS MAY BE USED OR © COPYRIGHT  
REPRODUCED IN ANY MANNER  
WITHOUT WRITTEN AUTHORIZATION.

CLIENT NUM		HNZ-V-PT006108-4820-STR-DWG-404	
PROJ NUM		SHT:	
E2602		1 OF 1	
MARK NUM	DRG NUM		REV
-	E2602-4820-DWG-404		B

